

DNP	BG	USA	ISO	CH2	CH3	øE	L1	L2	L3	F	COD. (F)	COD. (M)				
13	3	08	12.5	27	27	38	96	70	48	G 1/2	PPV1.1313.002	PAV1.1313.003				
										1/2 NPT	PPV1.1313.012	PAV4.1313.013				
										RC 1/2	PPV1.1313.042	PAV1.1313.043				
											92.5	66.5	48	M 22x1.5	PPV1.1322.102	PAV1.1322.103
											96	70	48	3/4 UNF	PPV1.1319.032	PAV4.1319.033
														G 1/2		PAV4.1313.003
						G 1/2				PKV1.1313.003						
										1/2 NPT		PKV1.1313.013				

### CARATTERISTICHE TECNICHE

**Materiali:** acciaio zincato e passivato giallo con parti sollecitate carbonitrate o temprate ad induzione. 12 sfere radiali di aggancio UNI 100CR6. **Guarnizioni:** in gomma nitrilica NBR. Altre qualità a richiesta. **Temperatura di esercizio:** con guarnizioni standard -25°C + 125°C. **Antiextrusore:** in Teflon puro. Disponibili su richiesta ghiera speciali, adatte a coprire una vasta gamma di applicazioni.

### TECHNICAL INFORMATION

**Materials:** zinc-plated and yellow bichromated steel with all high stressed components carbonitrided or hardened by induction. Locking is provided by 12 balls UNI 100CR6. **Seals:** standard in nitrile NBR. Other seals on request. **Working temperatures:** with NBR standard seals -25°C + 125°C **Back-up ring:** in pure Teflon. Special double action sleeves on request for a wide range of applications.

### TECHNISCHE MERKMALE

**Werkstoff:** verzinkter und gelb chromatierter Stahl mit allen verschleissbeanspruchten Komponenten carbonitriert oder induktivgehärtet. 12 Verriegelungskugeln UNI 100CR6. **Dichtungen:** aus Nitril NBR lieferbar. Andere Dichtungen auf Anfrage ebenfalls lieferbar. **Betriebstemperatur:** mit NBR Standard-Dichtung - 25°C + 125°C. **Stuetzring:** aus rein Teflon. Doppelt wirkende Schiebehülse fuer vielfaeltige Hydraulikanwendungen ebenfalls lieferbar.

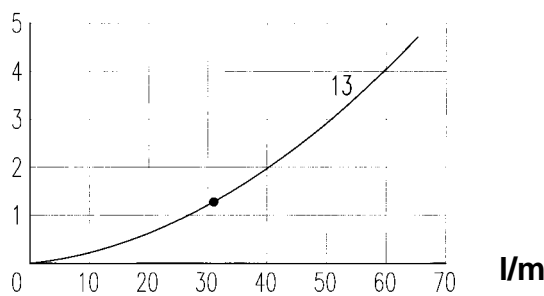
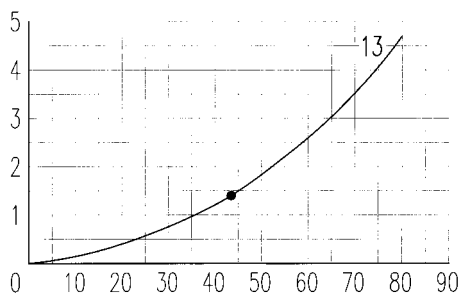
### CARACTERISTIQUES TECHNIQUES

**Matériel:** acier zingué et bichromaté jaune avec les composants soumis à sollicitation carbonitrurés ou trempés à induction. 12 billes de verrouillage UNI 100CR6. **Joints:** nitrile NBR en standard. Autres qualités sur demande. **Température de service:** avec joints standard - 25°C + 125°C. **Bague anti-extrusion:** en Teflon pur. Sur demande douille à double action pour un vaste domaine d'applications.

Dimensione nominale Nominal size Nennmass Dimension nominale				Press. max d'esercizio Max working pressure Max Betriebsdruck Press. de service max	Portata nominale Rated flow Durchfluss Débit	Pressione min di scoppio / Min burst pressure Min Berstdruck / Pression d'éclatement min			Spillaggio / Fluid spillage Ölverlust / Ecoulement	
DNP	BG	USA	ISO			Maschio / Male Stecker / Mâle	Femmina / Female Muffe / Femelle	Innestato / Coupled Gekuppelt / Accouplé		
<b>PPV1/PAV4</b>										
DNP	BG	USA	ISO	DN (mm)	(bar)	(l/m)	(bar)	(bar)	(bar)	(cc)
<b>13</b>	<b>3</b>	<b>08</b>	<b>12.5</b>	10.6	250	43	1060	1380	1160	3.9
<b>PKV</b>										
DNP	BG	USA	ISO	DN (mm)	(bar)	(l/m)	(bar)	(bar)	(bar)	(cc)
<b>13</b>	<b>3</b>	<b>08</b>	<b>12.5</b>	9	250	31	1240	1380	1160	3.9

PERDITA DI CARICO / PRESSURE DROP / DRUCKVERLUST / DEBIT DE PRESSION ( $\Delta p$  bar - l/m)

$\Delta p$  (bar)

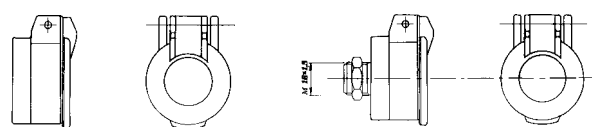
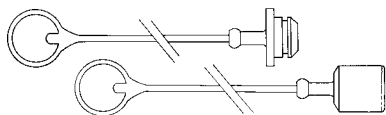


PPV1/PAV

PPV1/PKV1

ACCESSORI / ACCESSORIES / ZUBEHÖR / ACCESSOIRES

DNP size	Tappo per femmina Female dust plug Staubstecker Bouchon pour fem.	Cappuccio per masc. Male dust cap Staubkappe Capuchon pour mâle	Colore Colour Farbe Couleur	Materiale Material Werkstoff Matériel	DNP size	Protezione per fem. Automatic fem. caps Klappdeckel für Muffe Protection pour fem.	Supporto per maschio Automatic male caps Steckerhalter Protection pour mâle	Colore Colour Farbe Couleur	Materiale Material Werkstoff Matériel
13	SPAV.13002	SPAV.13003	ROSSO / RED	PVC	13	SPPV.13302	SPPV.13303	NERO / BLACK	NYLON
13	SPAV.13012	SPAV.13013	GIALLO / YELLOW	PVC	13	SPPV.13312		GIALLO / YELLOW	NYLON
13	SPAV.13022	SPAV.13023	VERDE / GREEN	PVC	13	SPPV.13322		VERDE / GREEN	NYLON
13	SPAV.13032	SPAV.13033	BLUE / BLUE	PVC	13	SPPV.13332		BLUE / BLUE	NYLON
13	SPAV.13042	SPAV.13043	NERO/BLACK	PVC	13	SPPV.13342		ROSSO / RED	NYLON



GUARNIZIONI DI RICAMBIO / SPARE PARTS / ERSATZDICHTUNGEN / JOINTS

DNP size	O-RING FEMMINA / FEMALE O-RING MUFFE O-RING / O-RING FEMELLE	DNP size	ANTIESTRUSORE FEMMINA / FEMALE BACK-UP RING MUFFE STÜTZRING / CONTRE-JOINT FEMELLE				
13	PAV.013.120 NBR	PAV.013.120 V	VITON	PAV.013.120 E	EPDM	13	PAV.013.130 PTFE